

CERTIFIED LAND CORNER RECORDATION

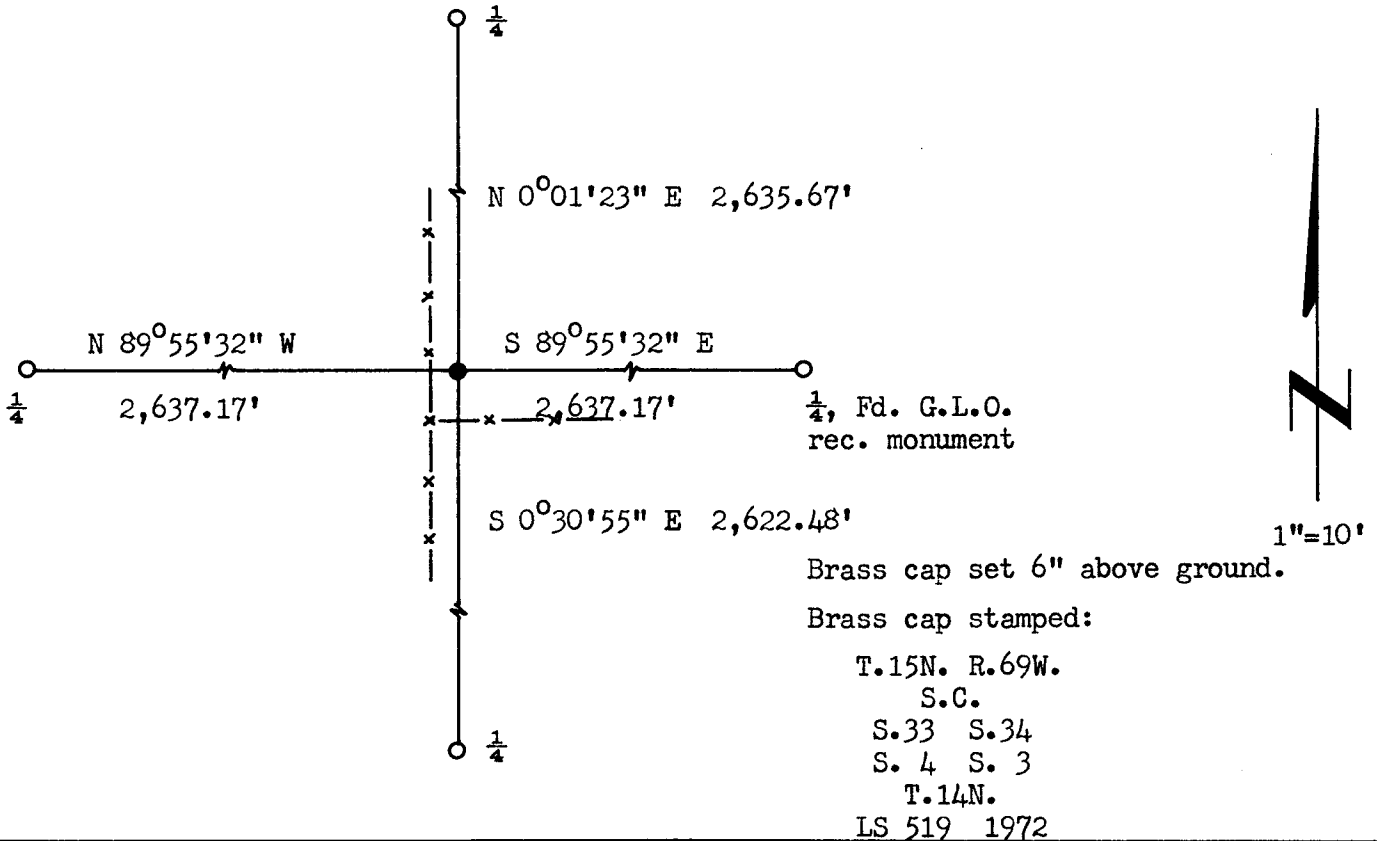
DESCRIPTION OF CORNER EVIDENCE FOUND, AND ORIGINAL RECORD (If known)

LOCATION No evidence found.
 S.33 S.34 Corner re-established by single proportionate measurement.
 S. 4 S. 3 G.L.O. record - Granite boulder, 16 x 11 x 11.
 T.15N.,R.69W.
 T.14N.,R.69W.
 6th P.M.

DESCRIPTION OF MONUMENT AND ACCESSORIES ESTABLISHED TO PERPETUATE THE ORIGINAL LOCATION OF THIS CORNER:

At the corner: Set a 1 1/2" dia. x 30" long iron pipe with brass cap.
 Accessories: None

SKETCH, WITH COURSE AND DISTANCE TO ADJACENT CORNER IF DETERMINED IN THIS SURVEY.
 (May Sketch or Paste Reproduction on Reverse Side.)



I, R.L. Hudson certify that I have carefully performed ~~or reviewed~~ the work done on the diagrammed corner as reported on this recordation form and approve the same.

R.L. Hudson Wyoming L.S. No. 519
 Signature of Surveyor Registration No.

STATE OF WYOMING,
 Office of Clerk and Recorder,
 County of Laramie

This "corner record" was filed for record on the 30th day of October, 1972, was noted on the cross-index plat and is assigned page No. 15-69, in book No. ONE.

John B. Williams
 County Official

Cross Index No. <u>14N</u>	T. <u>69W</u>	R. <u>6th</u>	Mer.
_____	T. _____	R. _____	Mer.
_____	T. _____	R. _____	Mer.
_____	T. _____	R. _____	Mer.
_____	T. _____	R. _____	Mer.
_____	T. _____	R. _____	Mer.
_____	T. _____	R. _____	Mer.

The State of Wyoming }
County of Laramie } SS

This instrument was filed for record
at 9:46 o'clock P. M. on the
28th day of October
A. D. 1928 and duly recorded in
Book _____ on page _____



County Clerk & Ex-Officio Register of Deeds

Deputy